



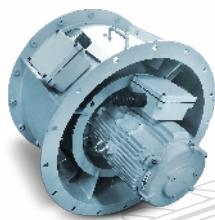
**rotomotive**  
Looks good. performs better.



## FORCE THAT DEFINES THE JOURNEY



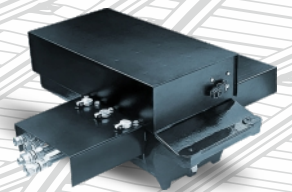
**BLDC  
FANS**



**AUXILIARY MOTORS  
WITH BLOWER**



**TRACTION  
MOTORS**



**POINT MACHINES  
AND MOTORS**



Operating in India since 2006, **Rotomotive Powerdrives India Ltd** has built a strong foundation in power transmission solutions by combining international expertise with its deep-rooted presence and manufacturing excellence in India. With operations aligned to global standards, Rotomotive reflects a commitment to blending world-class practices with local strengths-delivering lasting value to the Indian market while contributing to growth on a global scale.

Rotomotive leverages its capabilities to design, prototype, and manufacture motors for diverse applications. Since commissioning our first plant, Rotomotive has expanded with a modern facility spanning over 2L sq. feet, equipped with advanced automation, testing systems, and efficient storage. Our Modern manufacturing plant has advanced machinery to support state-of-the-art processes and manufacturing with assurance of ISO 9001 certified quality systems to ensure consistent quality, production flexibility and control of process variability.

We have invested in automated winding lines, Rotor and stator manufacturing, conveyor lines, Assembly and advance testing machines. We use automated test stations for all our in process & finished product verification and our parts are bar coded for easy traceability.



## MANUFACTURING FACILITIES



Testing Conveyor for BLDC Fans



Rotor Press



Coil insertion in stator



Vacuum Impregnation Plant



Coil Insertion

## MANUFACTURING FACILITIES



Inner Leveranth



Coil Insulation



Rotary Oven



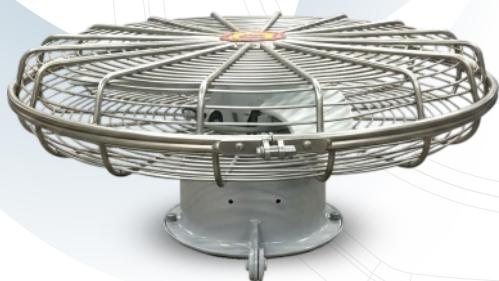
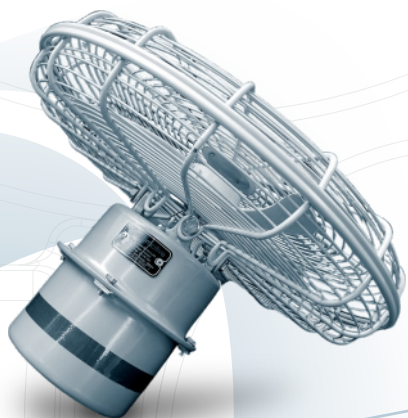
Rotor Machining



Stator Assembly



## BLDC FANS



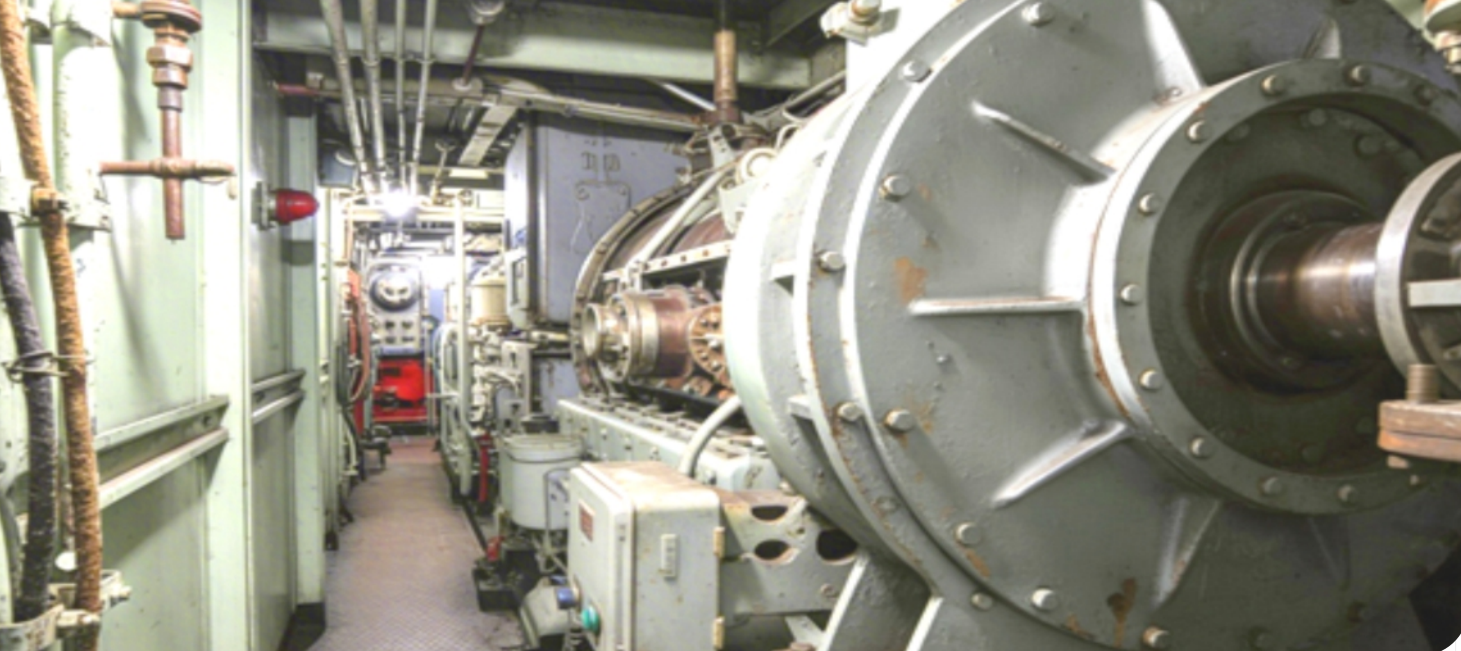
The BLDC Fan from Rotomotive Powerdrives is a high-efficiency brushless DC fan solution designed for railway applications. Built to meet stringent railway standards, these fans are engineered for reliable air circulation, low power consumption and reduced maintenance in railway coaches and rolling stock.

### KEY ADVANTAGES

- Brushless DC motor technology - eliminates brushes and commutator for higher reliability and longer life
- Energy-efficient operation - significantly lower power draw with consistent airflow and performance.
- Designed for railway use - compatible with typical 110 V DC coach supply and built to conform with relevant RDSO specifications.
- Low noise & lightweight design - quieter operation and reduced overall fan weight improve passenger comfort and system efficiency.

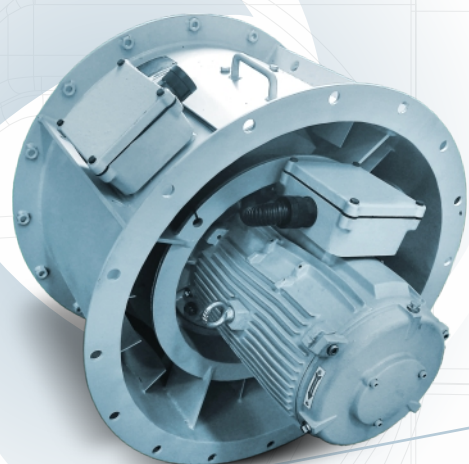
### TECHNICAL DETAILS

Input Protection	Max. input power	Min. service value	Operating voltage	Power source	Noise level (max)
< 155V and > 65V Restarting at 75V	32 W	2.0 cubic meters / min / watt	110 V DC 90V- 140V DC	110 V DC	55 dBA



## AUXILLARY MOTORS WITH BLOWER

Rotomotive Auxiliary Motors are engineered for railway applications to power essential onboard systems that support locomotive and rolling stock operation. These rugged electric motors are designed for continuous duty and dependable performance in demanding rail environments, helping drive auxiliary equipment such as blowers, compressors, HVAC systems, ventilation and other support systems common in train coaches and locomotives. Railway auxiliary motors play a vital role in ensuring stable, efficient electrical power delivery to non-traction systems across the train



### KEY ADVANTAGES

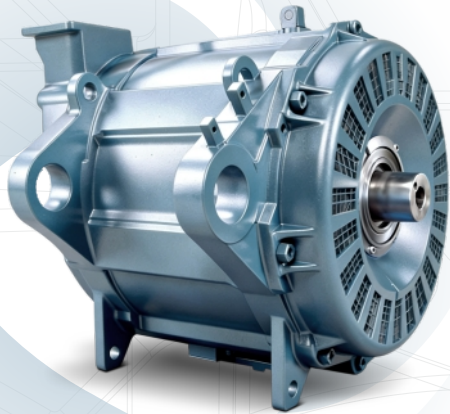
- Robust construction to withstand vibration, thermal and operational stresses typical of rail service.
- High reliability and consistent performance for extended duty cycles.
- Engineered for efficient power delivery in auxiliary roles that complement traction systems.
- Versatile design suitable for multiple auxiliary functions on locomotives and train coaches

### TECHNICAL DETAILS

Type	Blower Total Head in mm wg at 20°C (Pa)	Air Delivery at 20°C m3/Sec.	Configurations	kW Rating	Asynchronous Speed r.p.m	Motor Frame Size
Centrifugal	550 Pa	0.1 m3/Sec	2- Pole	0.75	3000	90L TEFC
Centrifugal	475 Pa	0.67 m3/Sec	2- Pole	3	3000	100L TEFC
Mixed flow centrifugal	1390 Pa	1 m3/Sec	2- Pole	3	3000	132M TEAO
Mixed flow centrifugal	BO-BO 3450 CO-CO 295 2950 Pa	4.05 m3/Sec	2- Pole	25	3000	200L TEAO
Mixed flow centrifugal	1781 Pa	8.2 m3/Sec.	2- Pole	30	3000	200L TEAO



## TRACTION MOTORS



Rotomotive Traction Motors are high-performance electric motors engineered for railway propulsion systems, translating electrical energy into torque to drive train wheels. Designed with robust construction, compact packaging and efficient power delivery, these motors are suited for demanding rail applications where durability, dynamic response and continuous duty are critical.

### KEY ADVANTAGES

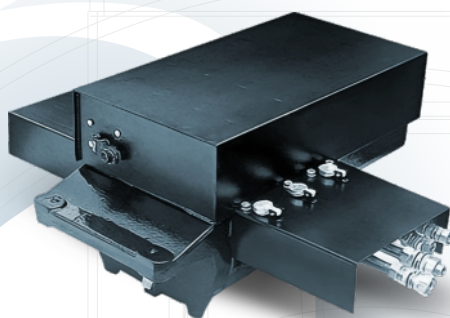
- High air-gap flux density for superior dynamic performance.
- Outstanding power-to-weight ratio, enabling powerful output in a compact form.
- Large torque-to-inertia ratio for rapid acceleration and control.
- Smooth torque delivery even at low speeds, essential for start-stop rail conditions.
- Accurate torque control at zero speed for precision movement.
- Capable of high-speed operation with stable performance.
- High overload torque capacity to handle demanding loads.
- Excellent efficiency and power factor for energy savings and reliability.

### TECHNICAL DETAILS

Configurations	Performance	Efficiency	Operating voltage	Current (Continuous)	Starting Torque	Speed (Continuous)
6- Pole	850 kW	95%	2180V	270 A	9200 Nm	1283 RPM



## POINT MACHINES AND MOTORS

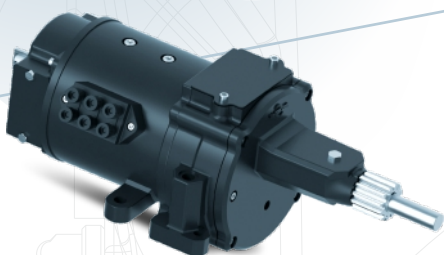


A point machine (also known as a switch or point motor) is a railway turnout actuation device used to remotely operate railway points (track switches), enabling trains to be routed from one track to another with precision and safety.

Rotomotive Point Machines combine rugged engineering with efficient electric operation to ensure reliable switch blade movement, locking and position detection — critical functions that support safe train routing and signalling systems.

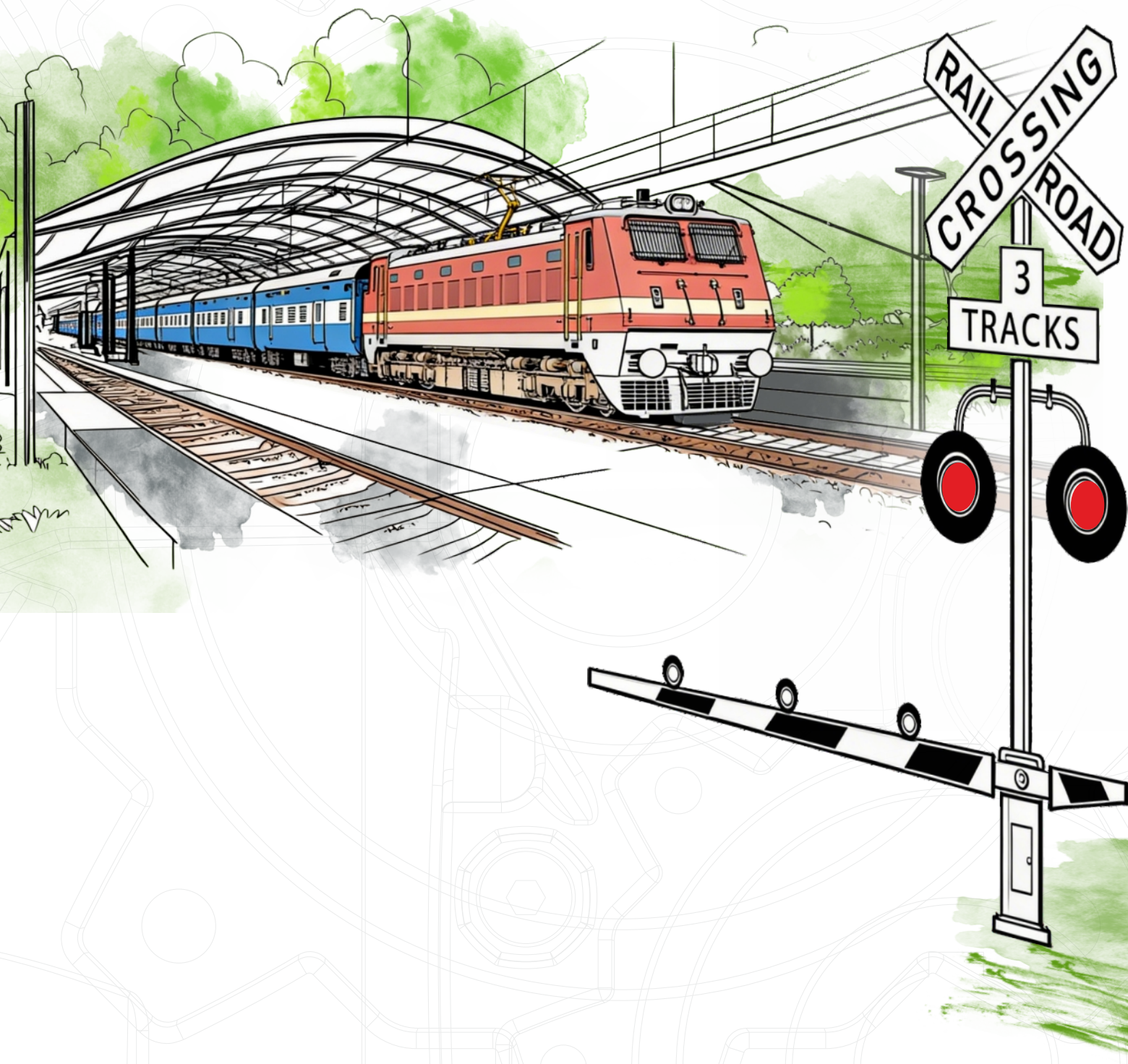
### KEY ADVANTAGES

- Electrically driven mechanism for precise switch actuation and remote control.
- Robust construction designed for continuous railway service conditions.
- Integrated locking and detection functions for safe confirmation of switch position.
- High dynamic performance with reliable torque delivery. (Based on typical industry-grade design)



### TECHNICAL DETAILS

Time of operation (Max.)	Current At 450 Kg load	Test voltage.	Test load on throw bar	Slipping load	Stalling load (Min)	Motor
4.0 Sec.	≤ 4.5 Amp.	110 V DC	450 Kg	≤ 580 Kg.	1000 Kg.	110 V DC 0.44 kW
5.0 Sec.	≤ 5.5 Amp.	110 V DC	450 Kg	≤ 580 Kg.	1000 Kg.	110 V DC 0.44 kW



**rotomotive**

*looks good. performs better.*

**Rotomotive Powerdrives India Ltd.**

223, Napa Talpad, Gana-Borsad Road, Tal: Borsad,  
Anand-388560, Gujarat, India

Ph.: +91-9227110010/20/30 Fax: +91-2692-235209  
Email: [info@rotomotive.com](mailto:info@rotomotive.com) • [ir.tender@rotomotive.com](mailto:ir.tender@rotomotive.com)  
[www.rotomotive.com](http://www.rotomotive.com)

**Motive Srl**

Via Le Ghiselle, 20  
25014 Castenedolo (BS) - ITALY

Ph.: +39 030 2677087 Fax: +39 030 2677125  
Email: [motive@motive.it](mailto:motive@motive.it)  
[www.motive.it](http://www.motive.it)